

# THE LONDON RESORT

## The London Resort Development Consent Order

BC080001

### Environmental Statement Volume 3: Figures

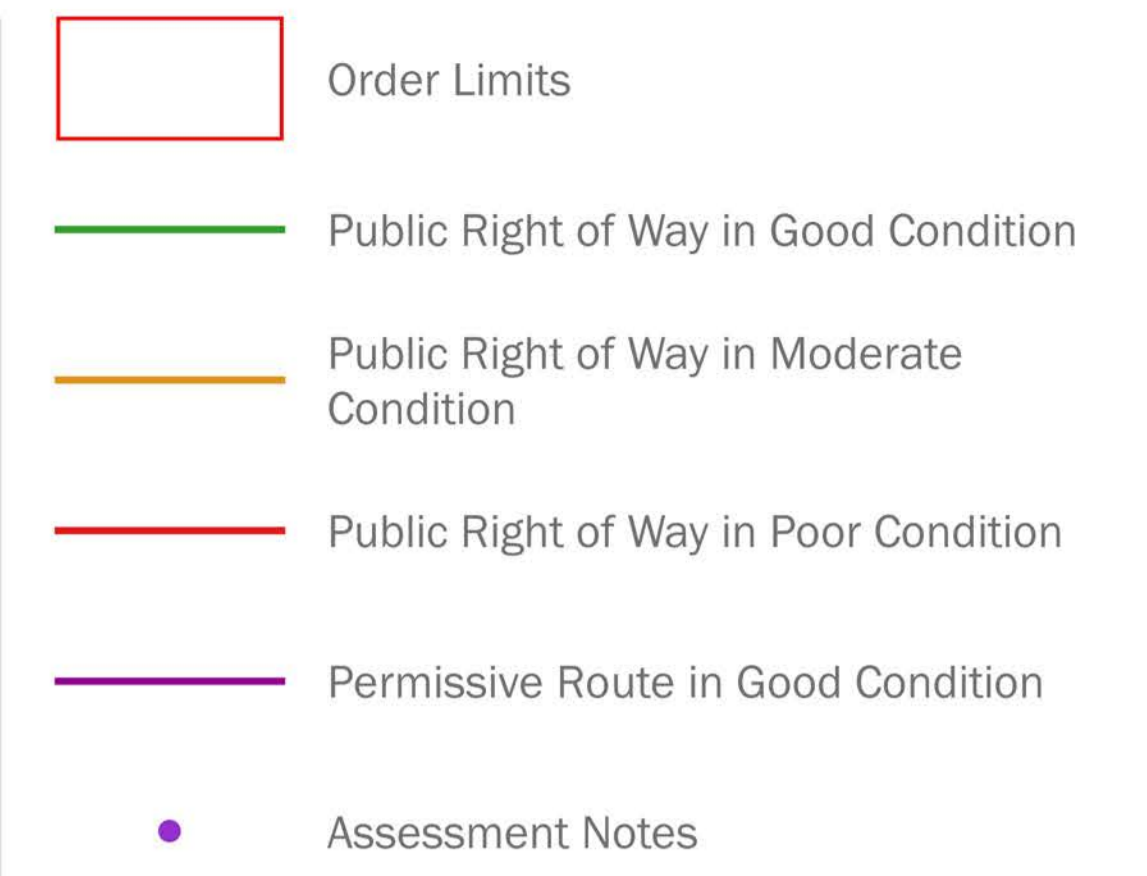
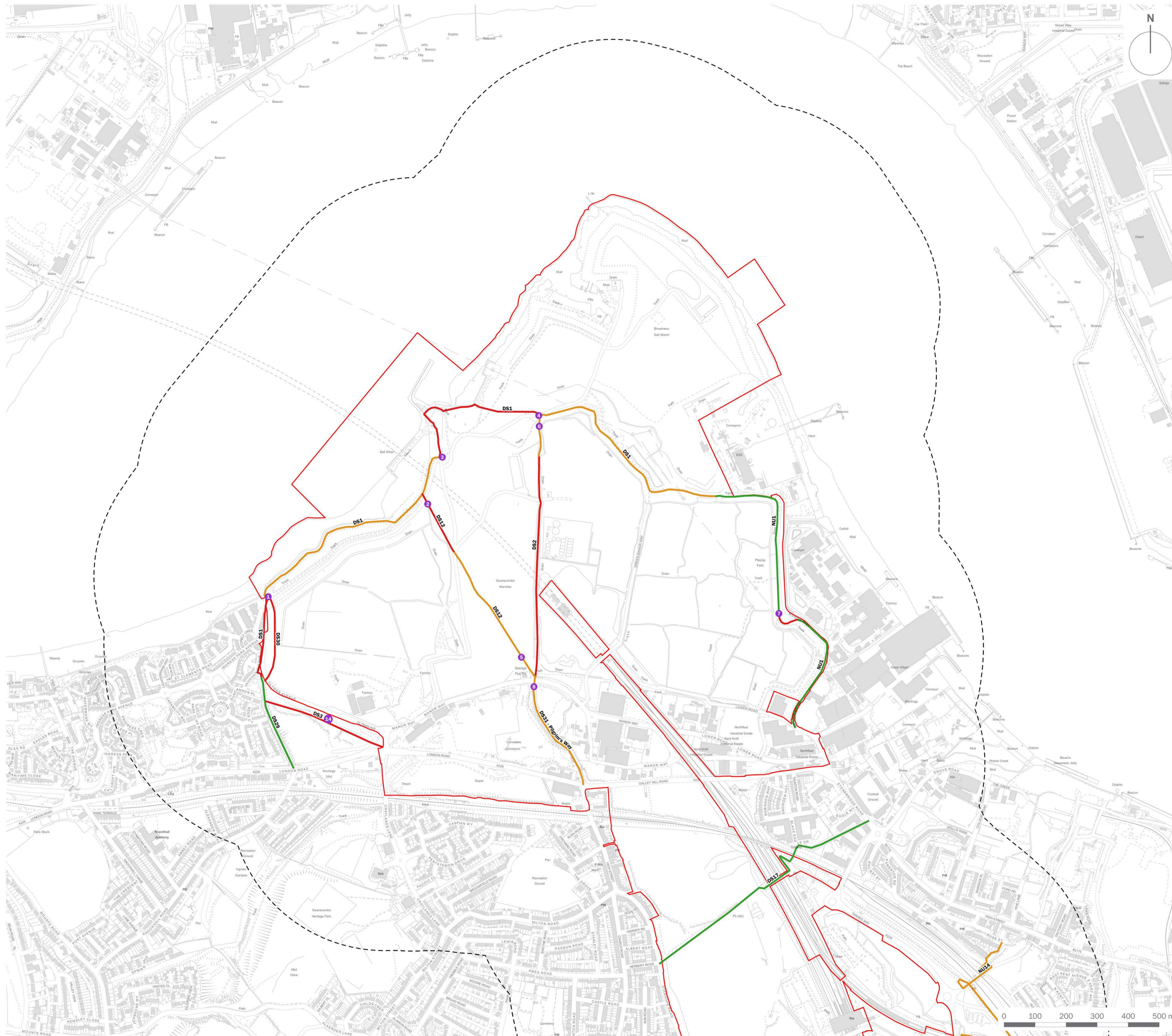
#### Figure 11.17 Public Rights of Way Assessment

Document reference: 6.3.11.17  
Revision: 00

December 2020

Planning Act 2008  
The Infrastructure Planning (Applications: Prescribed Forms and Procedure) Regulations 2009  
Regulation 5(2)(a)  
The Infrastructure Planning (Environmental Impact Assessment) Regulations 2017  
Regulation 12(1)

[This page is intentionally left blank]



client  
**London Resort Company Holdings Limited**

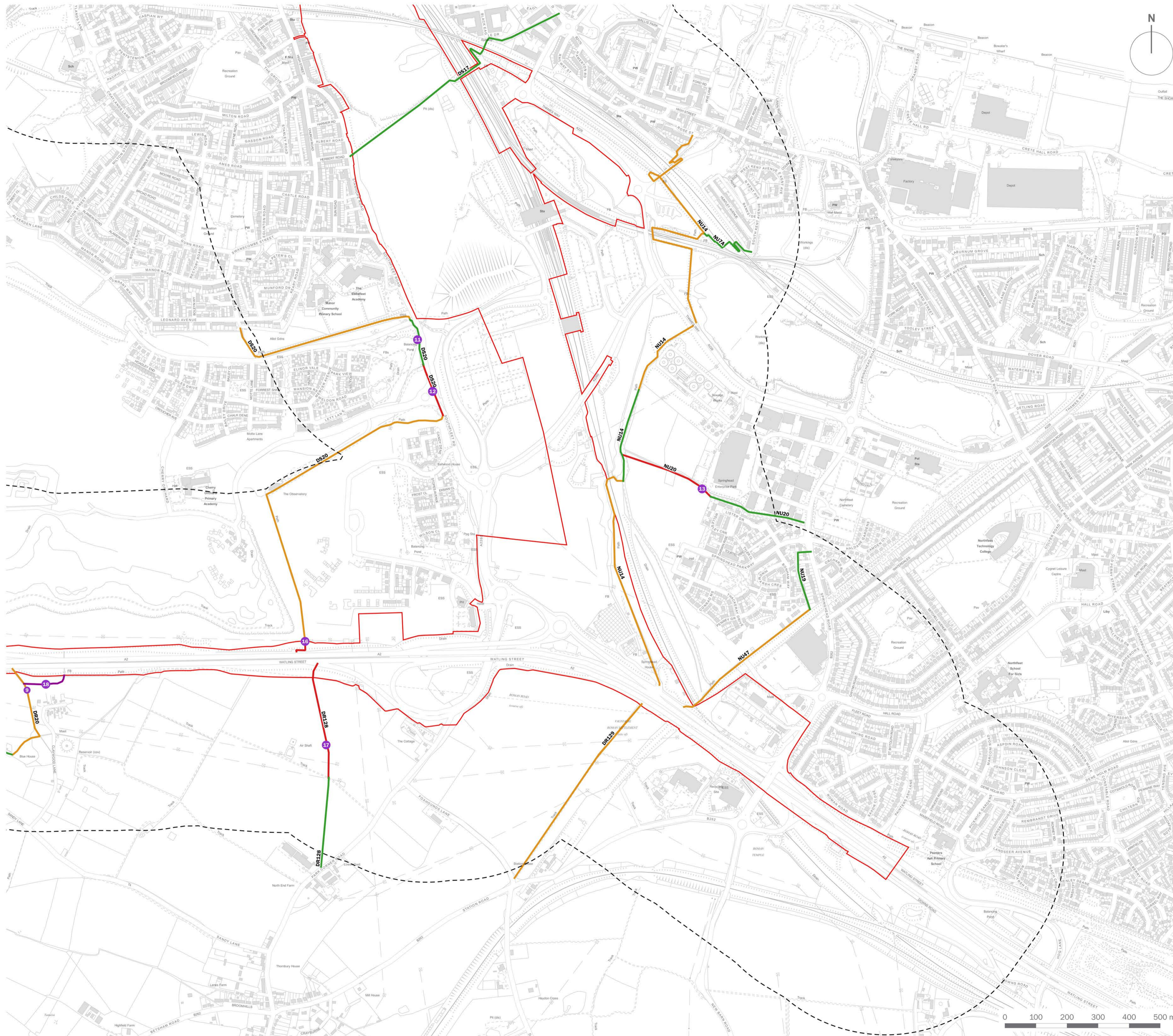
project title  
**The London Resort**

drawing title  
**Figure 11.17: Public Rights of Way Assessment (Sheet 1 of 4)**

date	<b>16 DECEMBER 2020</b>	drawn by	<b>MA</b>
drawing number	<b>edp5988_d101c</b>	checked	<b>OK</b>
scale	<b>1:6,000 @ A1</b>	QA	<b>GY</b>



Registered office: 01285 740427 - [www.edp-uk.co.uk](http://www.edp-uk.co.uk) - [info@edp-uk.co.uk](mailto:info@edp-uk.co.uk)



- Order Limits
- Public Right of Way in Good Condition
- Public Right of Way in Moderate Condition
- Public Right of Way in Poor Condition
- Permissive Route in Good Condition
- Assessment Notes



client  
**London Resort Company Holdings Limited**

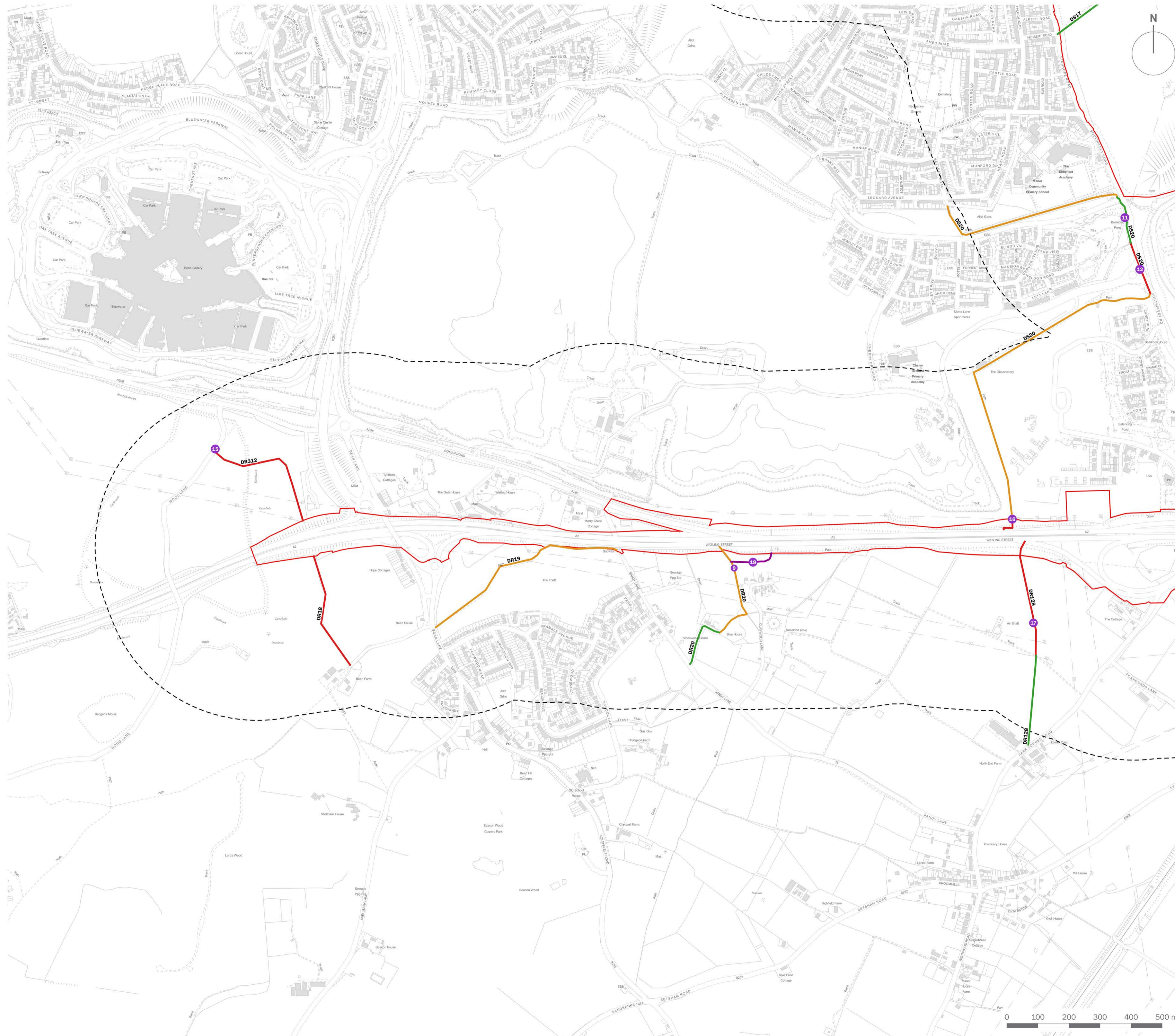
project title  
**The London Resort**

drawing title  
**Figure 11.17: Public Rights of Way Assessment (Sheet 2 of 4)**

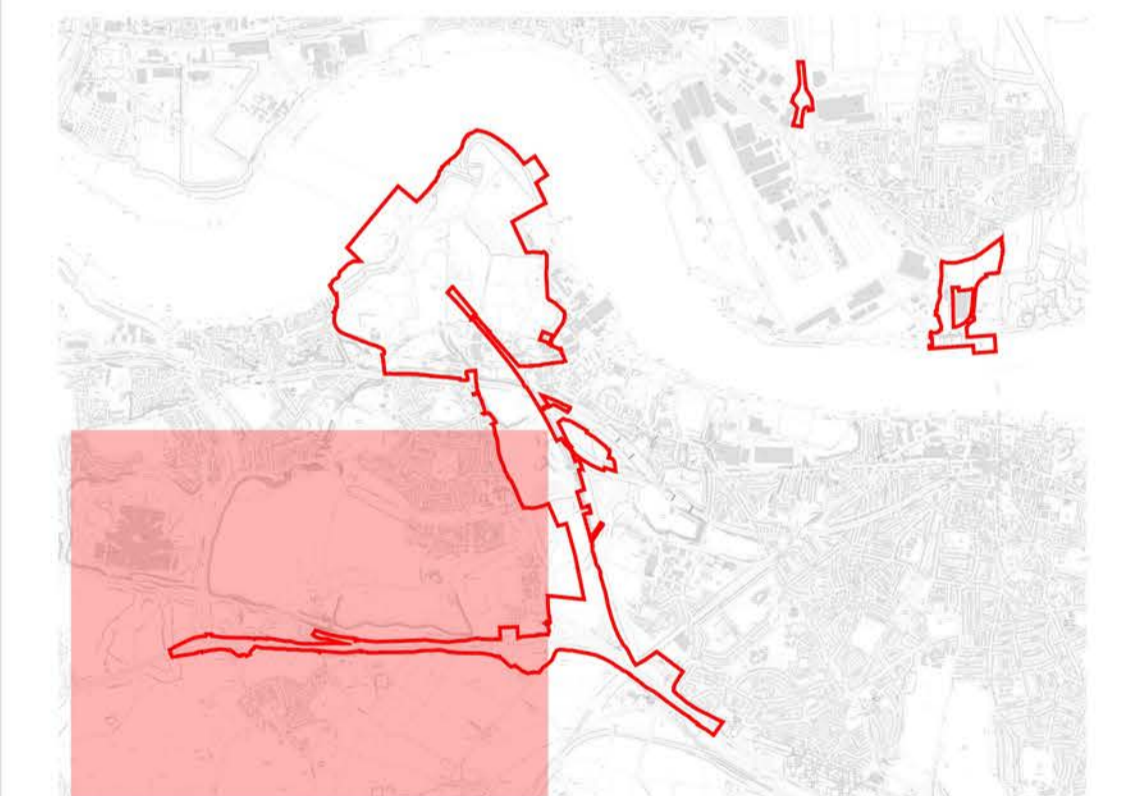
date	<b>16 DECEMBER 2020</b>	drawn by	<b>MA</b>
drawing number	<b>edp5988_d101c</b>	checked	<b>OK</b>
scale	<b>1:6,000 @ A1</b>	QA	<b>GY</b>



Registered office: 01285 740427 - [www.edp-uk.co.uk](http://www.edp-uk.co.uk) - [info@edp-uk.co.uk](mailto:info@edp-uk.co.uk)



- Order Limits
- Public Right of Way in Good Condition
- Public Right of Way in Moderate Condition
- Public Right of Way in Poor Condition
- Permissive Route in Good Condition
- Assessment Notes



client  
**London Resort Company Holdings Limited**

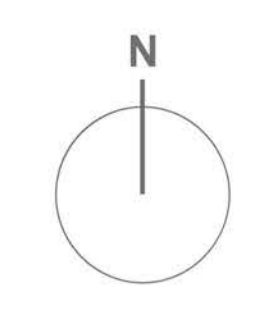
project title  
**The London Resort**

drawing title  
**Figure 11.17: Public Rights of Way Assessment (Sheet 3 of 4)**

date	<b>16 DECEMBER 2020</b>	drawn by	<b>MA</b>
drawing number	<b>edp5988_d101c</b>	checked	<b>OK</b>
scale	<b>1:6,000 @ A1</b>	QA	<b>GY</b>



Registered office: 01285 740427 - [www.edp-uk.co.uk](http://www.edp-uk.co.uk) - [info@edp-uk.co.uk](mailto:info@edp-uk.co.uk)



- Order Limits
- Public Right of Way in Good Condition
- Public Right of Way in Moderate Condition
- Public Right of Way in Poor Condition
- Permissive Route in Good Condition
- Assessment Notes



client  
**London Resort Company Holdings Limited**

project title  
**The London Resort**

drawing title  
**Figure 11.17: Public Rights of Way Assessment (Sheet 4 of 4)**

date	<b>16 DECEMBER 2020</b>	drawn by	<b>MA</b>
drawing number	<b>edp5988_d101c</b>	checked	<b>OK</b>
scale	<b>1:6,000 @ A1</b>	QA	<b>GY</b>



Registered office: 01285 740427 - [www.edp-uk.co.uk](http://www.edp-uk.co.uk) - [info@edp-uk.co.uk](mailto:info@edp-uk.co.uk)